

Parasite Identification

Vet Science CDE

Vet Science Clinic
School of Agriculture
Tennessee Tech University

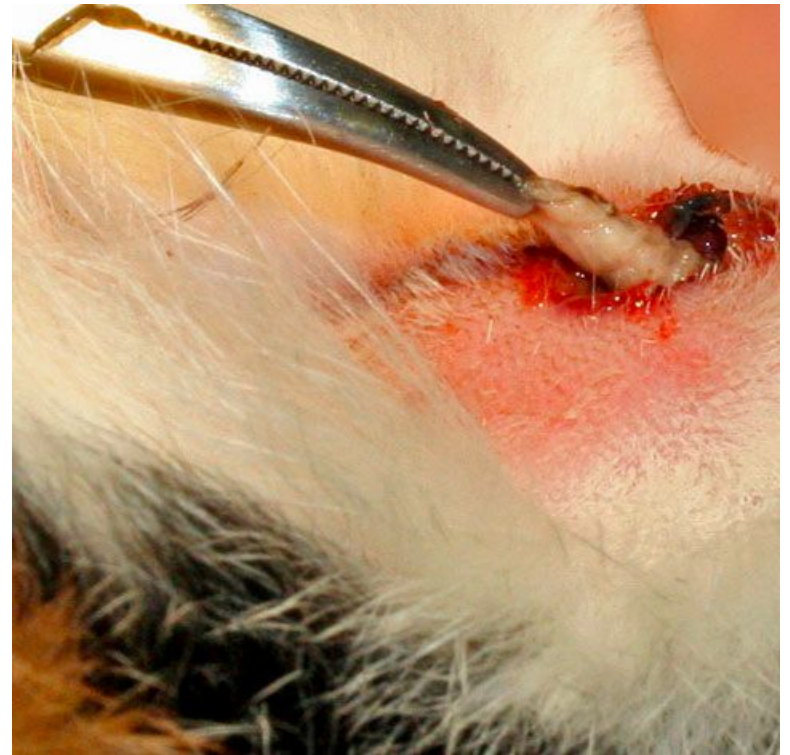
Blowfly- 300 (Family Calliphoridae)



Blowfly Maggot- 301 (Family Calliphoridae)



Cat Warble- 302 (Genus *Cuterebra*)



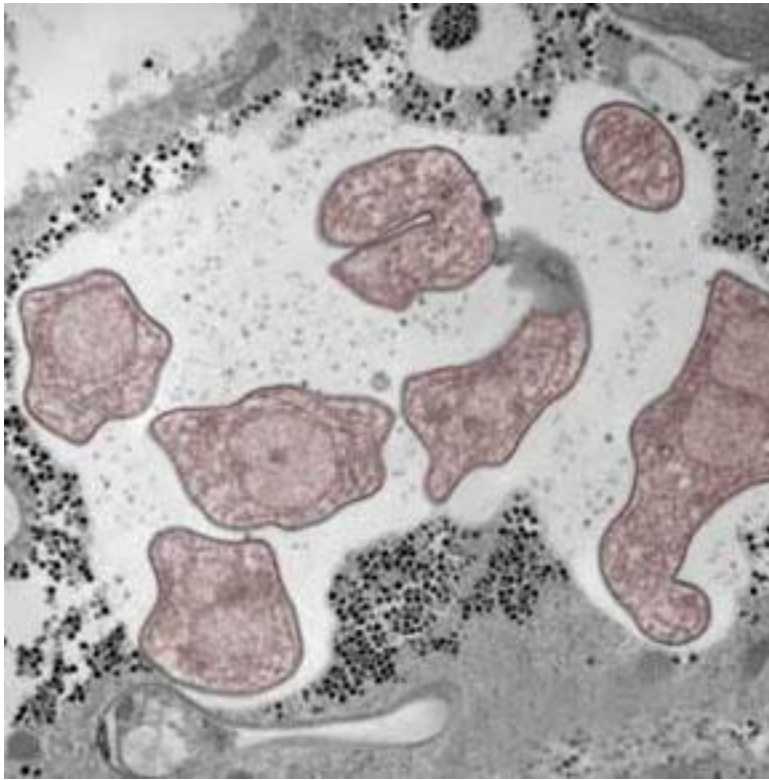
Cattle Grub- 303

(Genus *Hypoderma*)

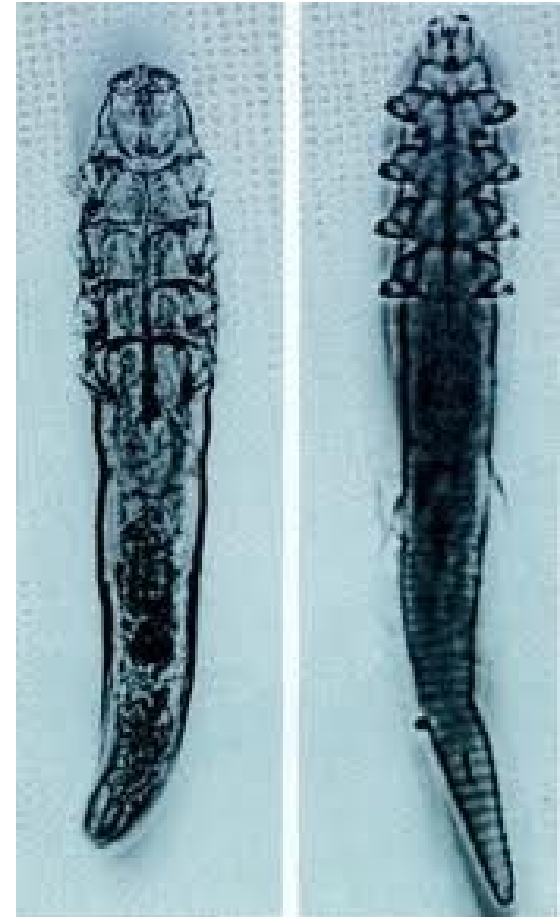


Coccidia- 304

(Genus *Isospora* or *Eimeria*)



Demodectic Mite- 305 (Genus *Demodex*)



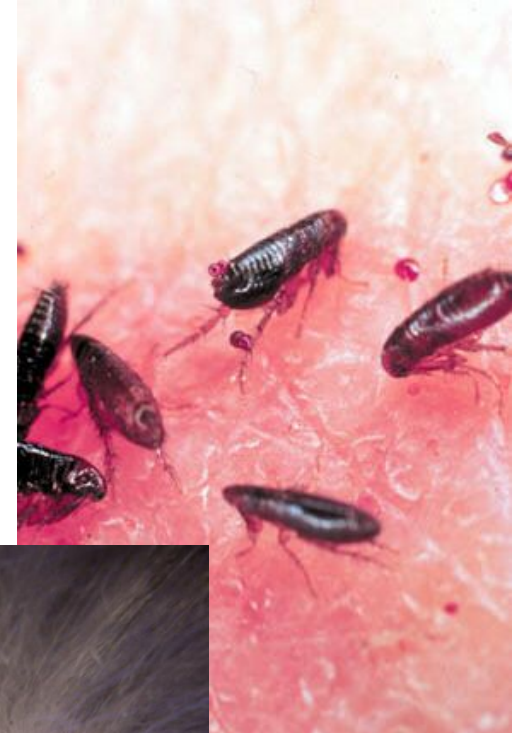
Ear Mite- 306

(Family Ascaridae; Genus *Otodectes*)



Fleas- 307

(Genus *Ctenocephalides*)



Flea Larva- 308

(Genus *Ctenocephalides*)



Flea Tapeworm- 309 (Genus *Dipylidium*)



Flea Tapeworm Egg- 310

(Genus *Dipylidium*)



Flea Tapeworm Segment- 311 (Genus *Dipylidium*)



A tapeworm segment



Giardia- 312

(Genus *Giardia*)

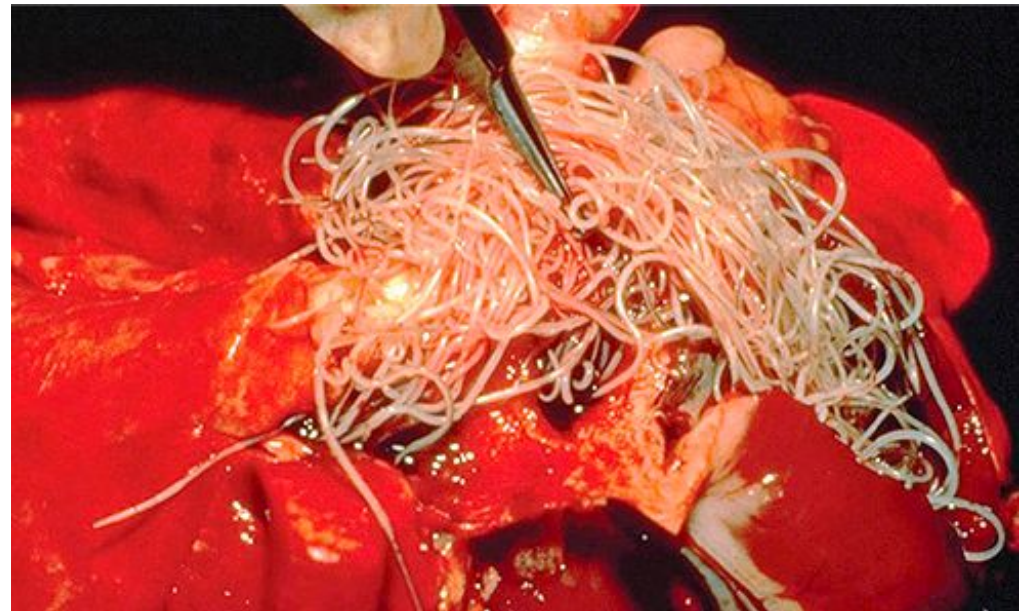
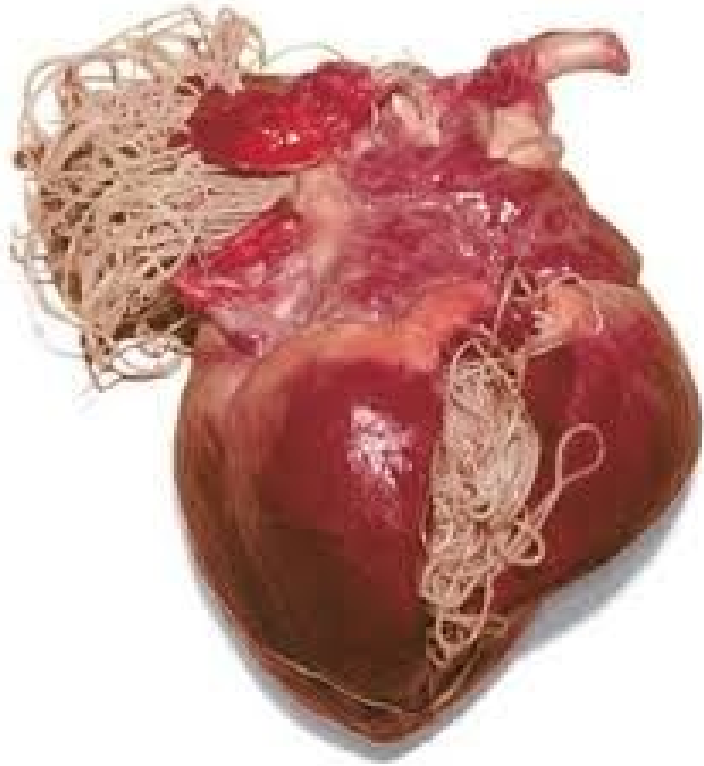


Hard Tick- 313

(Family Ixodidae, Genus *Amblyomma*
or *Dermacentor*)



Heartworm Adult- 315 (Genus *Dirofilaria*)



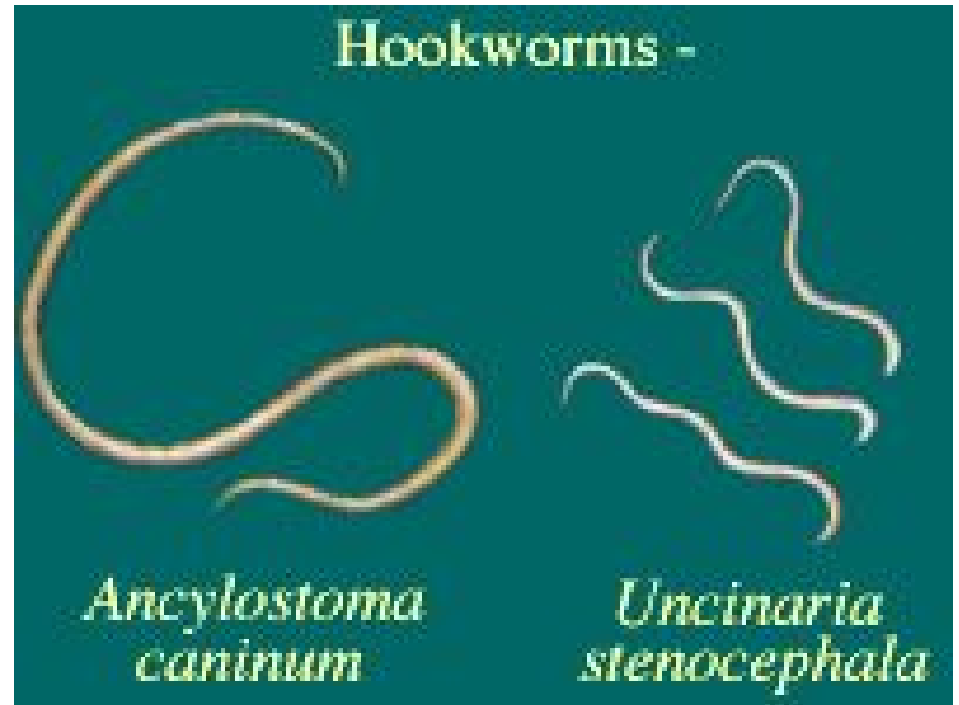
Heartworm Microfilaria- 316

(Genus *Dirofilaria*)



Hookworm Adult- 317

(Family Ancylostomatidae, Genus
Ancylostoma)



Hookworm Egg- 318

(Family Ancylostomatidae, Genus *Ancylostoma*)



Horse Bots- 319

(Genus *Gasterophilus*)



Horse Strongyles- 320

(Family Strongylidae; Genus *Strongylus*)



Lice- Biting 321 (Order Mallophaga; Genus *Bovicula*)



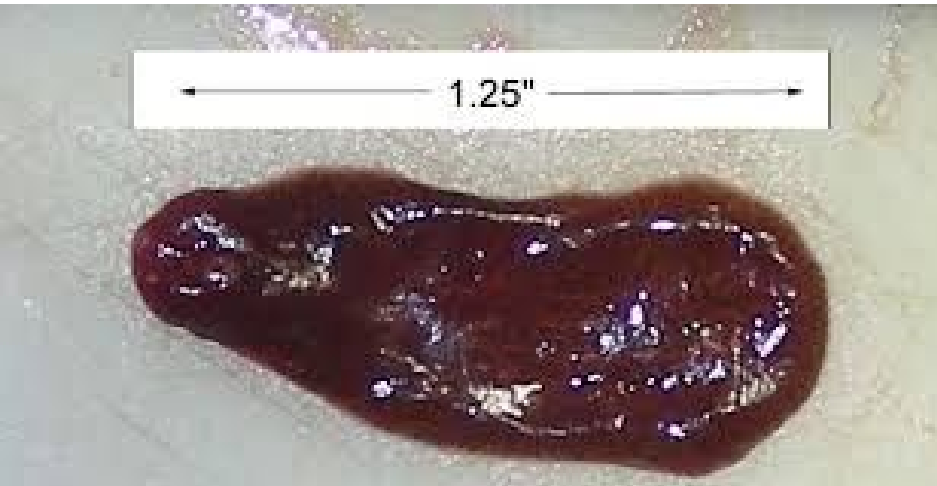
Lice- Sucking 322

(Order Anoplura, Genus *Linognathus*)



Liver Fluke-323

(Class Trematoda; Genus *Fasciola*)



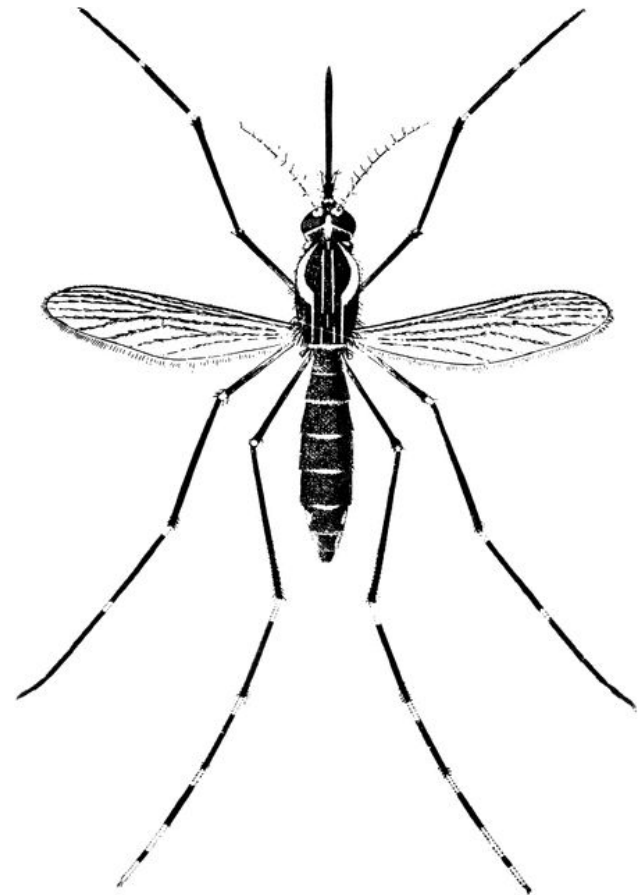
Lungworm- 324

(Family Metastronglyidae; Genus *Metastronglydus*)



Mosquito Adult- 325

(Family Culicidae, Genus *Anopheles*)



Mosquito Larva-326

(Family Culicidae, Genus *Anopheles*)

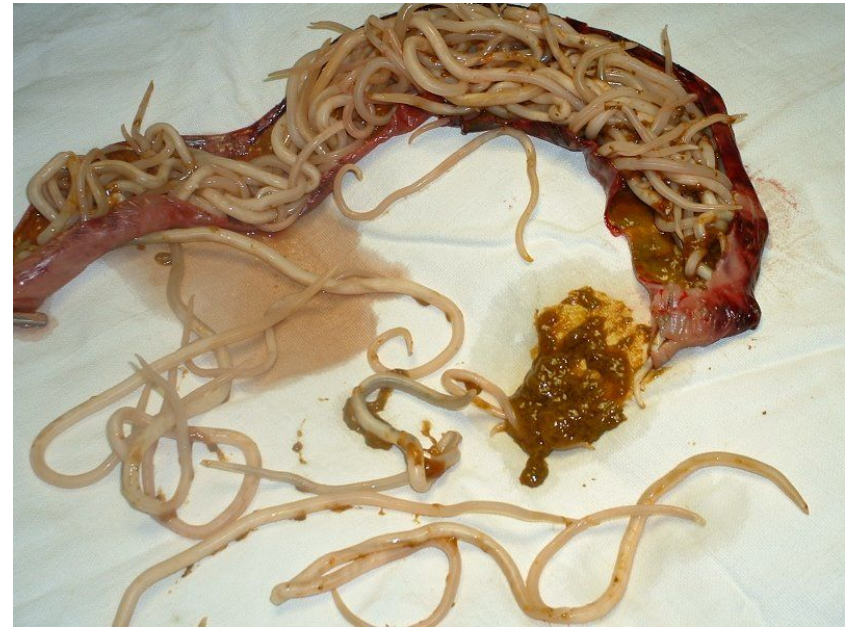


Pinworm- 327 (Genus *Oxyuris*)



Roundworm Adult- 328

(Family Ascarididae, Genus
Toxocara)



Roundworm Egg- 329
(Family Ascarididae, Genus
Toxocara)



Sarcoptic Mite- 330

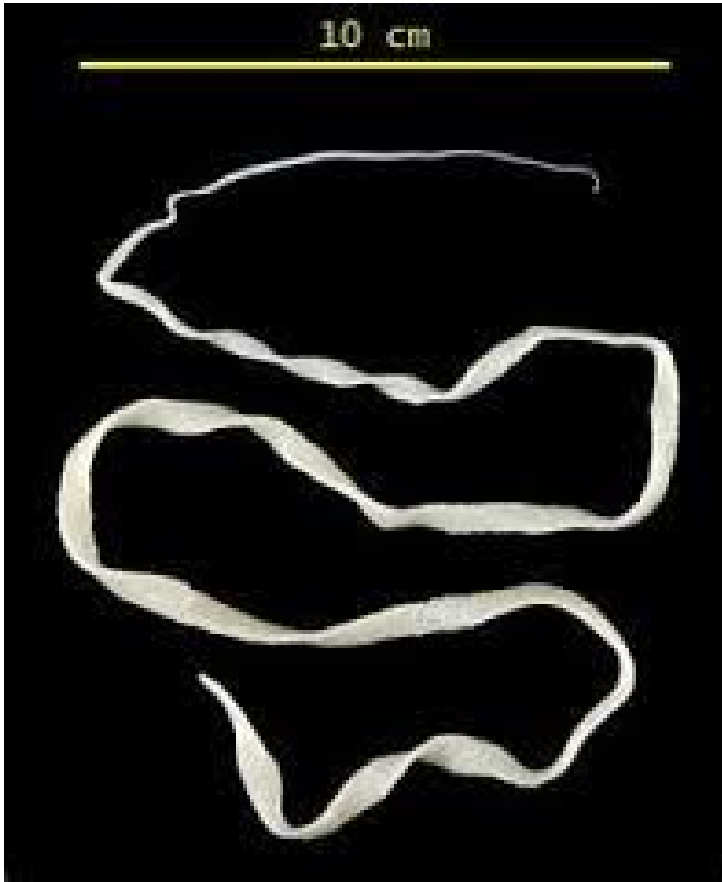
(Family Ascaridae, Genus *Sarcoptes*)



Sarcoptes scabiei with long unsegmented pretarsi on front legs and characteristic triangular spines.

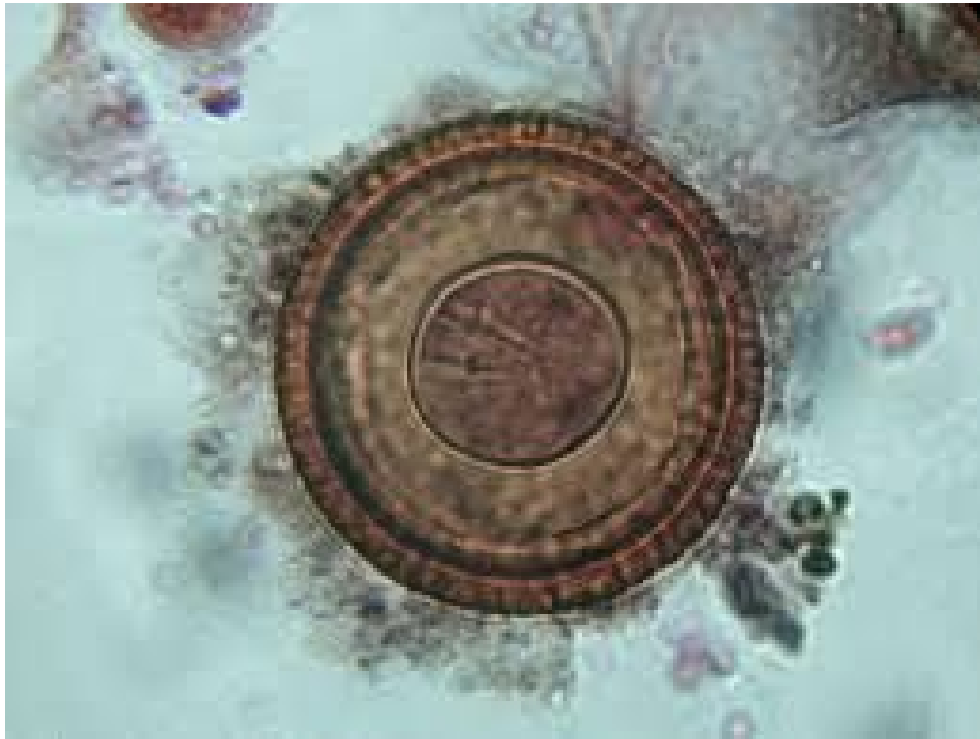
Taenia Tapeworm- 331

(Family Taeniidae, Genus *Taenia*)



Taenia Tapeworm Egg- 332

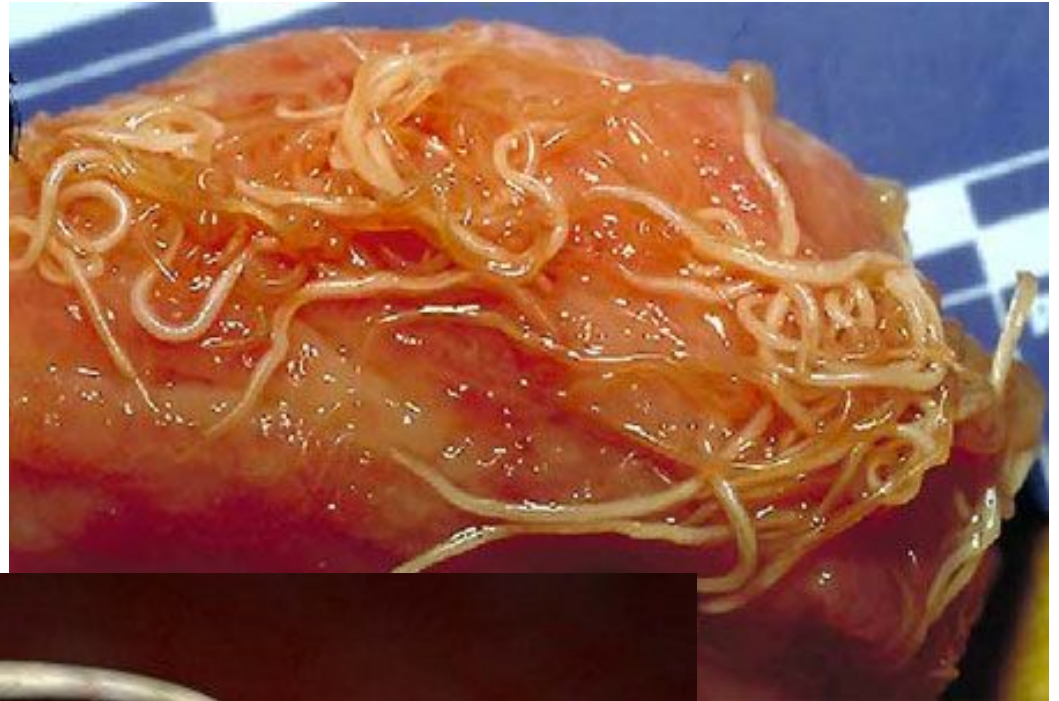
(Family Taeniidae, Genus *Taenia*)



Taenia Tapeworm Segment- 333 (Family Taeniidae, Genus *Taenia*)



Whipworm- 335 (Genus *Trichuris*)



Whipworm Egg- 336 (Genus *Trichuris*)

